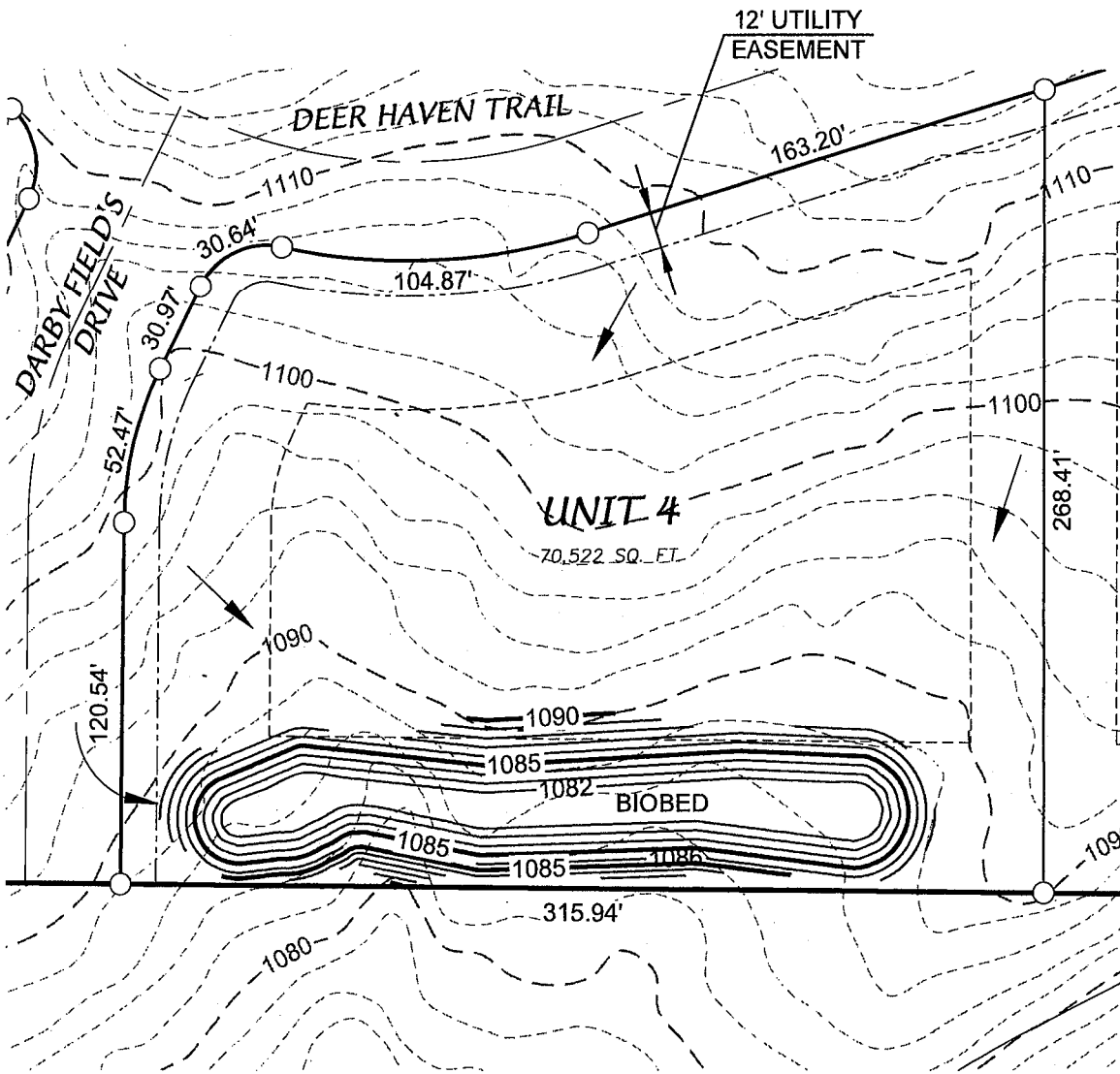


Deer Haven Estates - Unit 4



NOTE:
 BIO-BED TO BE MAINTAINED BY THE
 DEER HAVEN ESTATES CONDO ASSOCIATION

FRONT YARD SETBACK = 50'
 REAR YARD SETBACK = 50'
 LEFT SIDE YARD SETBACK = 25'
 RIGHT SIDE YARD SETBACK = 50'

D'ONOFRIO KOTTKE AND ASSOCIATES, INC.

7530 Westward Way, Madison, WI 53717
 Phone: 608.833.7530 • Fax: 608.833.1089
 YOUR NATURAL RESOURCE FOR LAND DEVELOPMENT



Scale 1" = 60'

DATE: August 9, 2018

F.N.: 18-05-106

REV.

DRAWN BY: NJH

U: /USER/1805106/DRAWINGS/1805106 - Lot Details.dwg